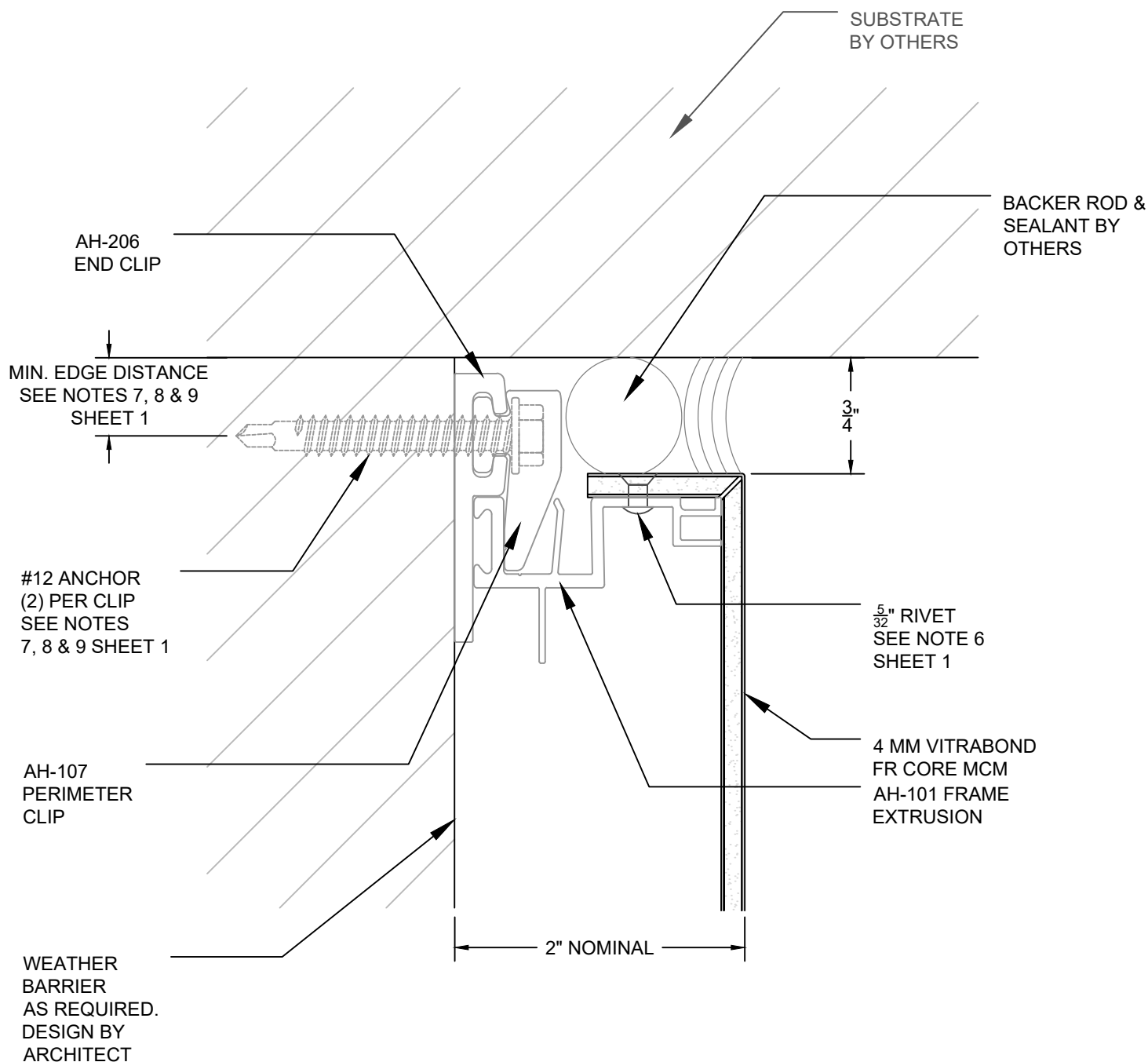


IF SELF TAPPING SCREWS
PENETRATE WEATHER
BARRIER, THESE LOCATIONS
MUST BE SEALED.

#10 X 3/8" SELF TAPPING
SCREWS MAY BE USED WITH
EXTERIOR INSULATED WALLS.



Sheet

9

Drawn By

JSJ

Date Drawn

10/12/23

Revisions

No 1 Date 1/18/21
No Date

Project Number

DWG-01

Project

ARROWHEAD FLEX VERTICAL
JAMB DETAIL-END - CLIP INSTALLATION

© Copyright Fairview Architectural LLC - Patented and/or Patent Pending